

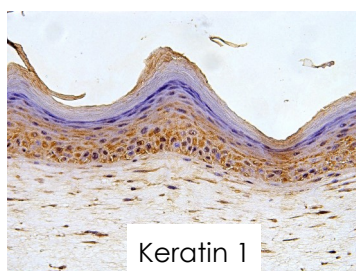
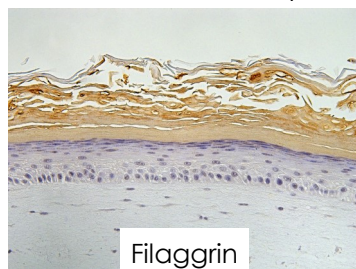
Immunohistochemistry analysis of Labskin

Summary:

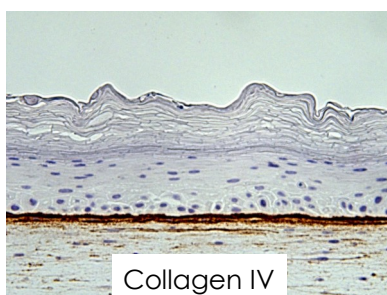
Labskin shows the same immunohistochemistry markers as human skin and is compatible with conventional paraffin wax embedding and cryo sectioning preparation techniques and a wide range of staining and immunohistochemistry protocols. (All examples were prepared by paraffin wax embedding).

Labskin Structure Analysis

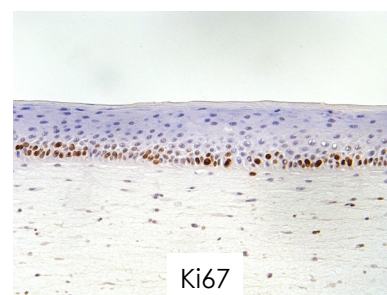
Barrier function analysis



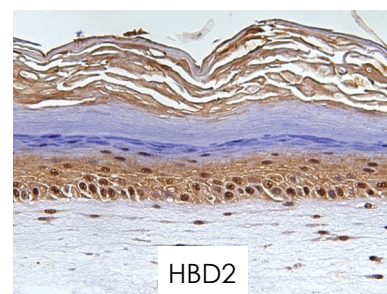
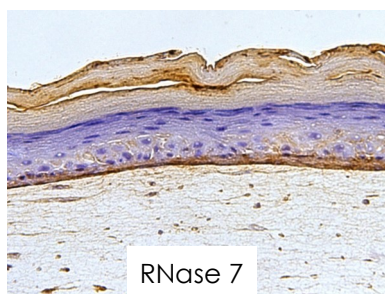
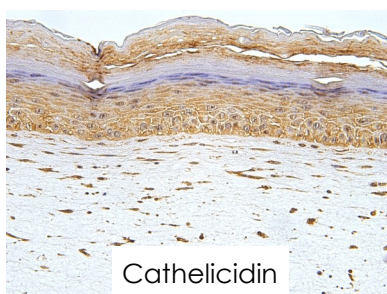
Basement membrane analysis



Cell proliferation analysis



Labskin Microbial Response Analysis



Labskin can be used within the same experimental design to simultaneously evaluate several endpoints including cytokine responses (i.e. IL-1 α , IL-6, IL-8, PGE2, TNF α , IL-10 etc.), histological changes, wound repair and photo-reactivity in addition to skin commensal and pathogenic microorganisms.

Contact us

Innovenn UK Ltd.
 National Agri-Food Innovation Campus, Sand Hutton, York, YO41 1LZ
 +44 (0)1904 404036 info@innovenn.co.uk